

# **HP Carrier Grade Server cc3310 AC/DC Power Supply and DC Cable Installation**

**For the cc3310 Carrier Grade Server**



**Manufacturing Part Number: AB229-90001**

**July 2004**

U.S.A.

© 2004, Hewlett-Packard Development Company, L.P.

---

## Legal Notices

The information in this document is subject to change without notice.

*Hewlett-Packard makes no warranty of any kind with regard to this manual, including, but not limited to, the implied warranties of merchantability and fitness for a particular purpose.* Hewlett-Packard shall not be held liable for errors contained herein or direct, indirect, special, incidental or consequential damages in connection with the furnishing, performance, or use of this material.

**Restricted Rights Legend.** Use, duplication or disclosure by the U.S. Government is subject to restrictions as set forth in subparagraph (c) (1) (ii) of the Rights in Technical Data and Computer Software clause at DFARS 252.227-7013 for DOD agencies, and subparagraphs (c) (1) and (c) (2) of the Commercial Computer Software Restricted Rights clause at FAR 52.227-19 for other agencies.

HEWLETT-PACKARD COMPANY 3000 Hanover Street Palo Alto, California 94304 U.S.A.

**Copyright Notice.** Copyright ©2004 Hewlett-Packard Development Company, L.P. Reproduction, adaptation, or translation of this document without prior written permission is prohibited, except as allowed under the copyright laws.

All rights reserved.

Printed in the U.S.A.

**Related Documents.** The *HP Server cc3310 User Information Diagnostics and Utilities Resource CD-ROM* has been provided with your server. It contains a complete documentation set for the server. Included on the CD-ROM is the *hp Carrier-Grade Server cc3310 Product Guide*, which contains in-depth troubleshooting, installation, and repair information.

In addition, the latest versions of all cc3310 documents, and any product updates to these documents, are posted under the appropriate server at: <http://docs.hp.com>. Search keyword cc3310.

## Reprogramming the SDR

---

**NOTE** The systems Sensor Data Records (SDR) must be reprogrammed every time the hardware configuration changes (any changes to memory, processors, power supplies, power cage, hot swap back plane, controller boards, or any hardware devices or Field Replaceable Units (FRU). Failure to reprogram the SDR may allow critical systems failures to occur without the appropriate Telco alarm.

---

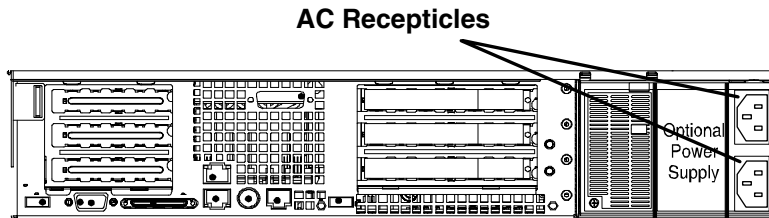
Use the following procedure to re-write the SDR after a hardware change has been installed:

1. Boot the system using the *HP Server cc3310 User Information Diagnostics and Utilities Resource CD*.
2. Once the CD has booted, select **Load Configuration Wizard**.
3. When the Load Configuration Wizard begins, press **Continue**.
4. Select **Server Configuration Wizard** and **Continue**.
5. Select **run wizard** and **Continue**.
6. Select only the **Load SRD's only on to this server** and **Continue**.
7. Set the date and time and select **Continue**.
8. Select **update just the SDR repository** and **Continue**.
9. Select **Yes - Activate BMC TAM** and **Continue**.
10. Choose any LED configuration you want and select **Continue**.
11. Save the server configuration to disk if you desire.

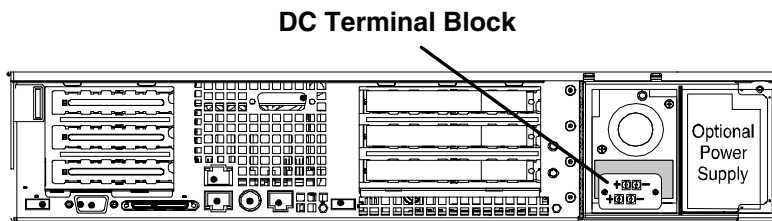
## AC and DC Power Supply Installation

Follow the Power Supply installation procedures presented in the *cc3310 Product Guide* (Chapter 7), which is provided on the *HP Server cc3310 User Information Diagnostics and Utilities Resource CD*. (Look under the Documentation tab.) After the additional power supply has been installed, reprogram the SRD as described in the preceding paragraph (Reprogramming the SDR).

**Figure 1-1. AC Power Connections on Server**



**Figure 1-2. DC Power Connections on Server**



---

## HP DC Power Cable A6900-63002

A DC power cable is available from HP for use with the cc3310 Server. This cable is 14 feet in length and includes lugs on 1 end (Network™ stock # 81N1501 type CRS-TO-1406-HT) for connection with the server power supply. The other end of this cable is unterminated. All wires are tagged to match power supply terminal block nomenclature.

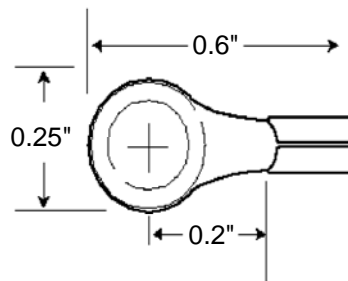
---

## Fabricating a DC Cable

If you will be creating a cable for use with the cc3310 server, you must utilize the correct number and size wires and lugs for connection with the server. A DC power terminal block is provided at the rear of each DC power supply. Your cable must connect to these terminals. For best results (to meet maximum current requirements) all four terminals of the terminal block (2+ and 2-) should be used.

Each terminal is rated for 15 Amps. Use 14 AWG wire gauge (minimum) and suitable terminal lugs. The terminal block will accept standard terminal lug size Network™ stock #81N1501 type CRS-TO-1406-HT that accept 14 AWG wire gauge. The width of the lug can be no more than 0.25 inches.

**Figure 1-3. Typical Terminal Lug**



NOTE: Terminal lug width should not exceed 0.25 "

lug

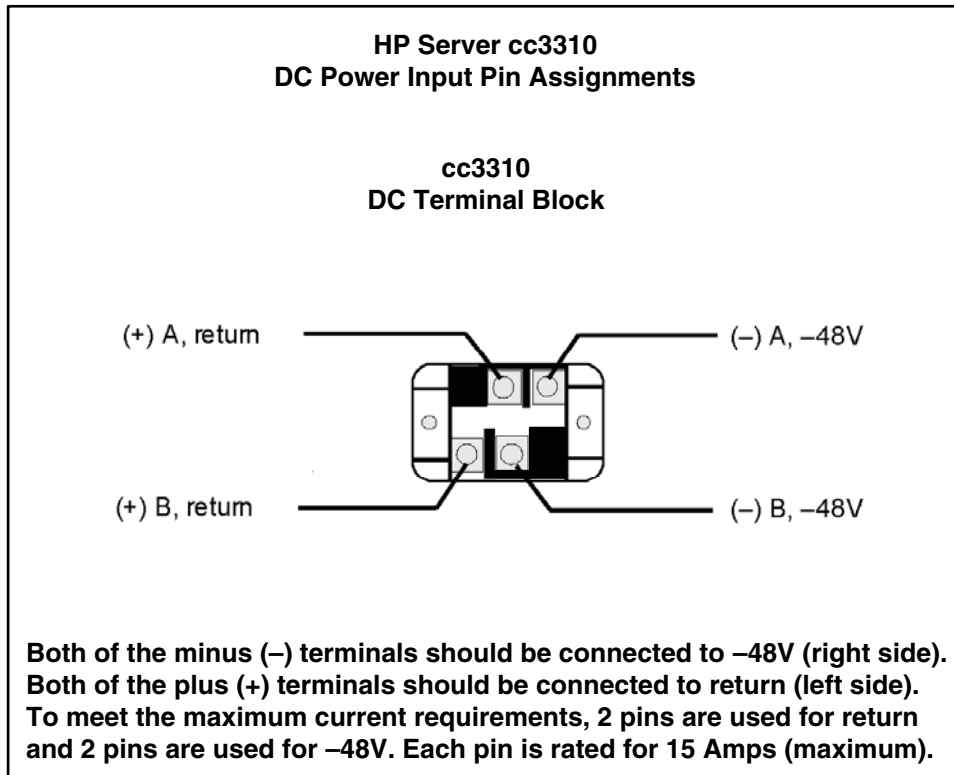
---

## Connecting DC Power Cable to Your Server

**NOTE** It is important that the connection details are followed to prevent damage to the cc3310 power supply. The power supply design incorporates current splitting in the terminal design which requires proper input power connection. It is also important to note that each power supply requires its own separate power cable with all four terminals connected/wired as indicated in the following diagram.

---

**Figure 1-4. DC Power Supply Terminal Block**



To connect the earth ground conductor to the chassis stud, proceed as follows:

1. Place a #8-32 nut on the chassis stud and tighten to 10 in-lbs.
2. Place the earth ground wire terminal lug on the chassis stud.
3. Place another #8-32 nut on the chassis stud so that the earth ground wire terminal is between the two nuts. Tighten the second nut to 10 in-lbs.

To connect the power cable to the DC terminal block, proceed as follows:

---

**CAUTION** For proper cooling and airflow, do not operate the server with the cover removed. Always reinstall the cover before turning the server on.

---

1. Verify that the power cord is not connected to a power source.
2. While referring to Figure 1-4, connect the power cable wires to the terminals of the power supply terminal block.
3. Connect the power cable to a suitable (-48V) power source.