

# Installing SUSE LINUX Enterprise Server 9 on the Intel Itanium 2 Processor Family



\* 5 9 9 1 - 5 3 0 2 \*

HP Part Number: 5991-5302  
Edition: 1, E0406



© Copyright 2006 Hewlett-Packard Development Company, L.P.

#### **Legal Notices**

Confidential computer software. Valid license from HP required for possession, use or copying. Consistent with FAR 12.211 and 12.212, Commercial Computer Software, Computer Software Documentation, and Technical Data for Commercial Items are licensed to the U.S. Government under vendor's standard commercial license.

The information contained herein is subject to change without notice. The only warranties for HP products and services are set forth in the express warranty statements accompanying such products and services. Nothing herein should be construed as constituting an additional warranty. HP shall not be liable for technical or editorial errors or omissions contained herein.

#### **Acknowledgments**

Intel® and Itanium® logo are trademarks or registered trademark of Intel Corporation or its subsidiaries in the United States and other countries.

Linux® is a U.S. registered trademark of Linus Torvalds.

SUSE® and SUSE LINUX Enterprise Server® are registered trademarks of Novell.

---

# Table of Contents

About This Document.....	7
Intended Audience.....	7
Document Organization.....	7
Typographic Conventions.....	7
Related Information.....	7
Publishing History.....	7
HP Encourages Your Comments.....	8
1 Introduction.....	9
Installation Requirements.....	9
2 Installing from Media.....	11
Starting the Installation.....	11
Specifying Installation Options.....	12
Choosing Linux Software Packages.....	13
Specifying Time Zone.....	14
Launching the Installation.....	14
3 Finalizing the Installation.....	15
Booting SLES 9.....	15
Setting the root Password.....	15
Configuring Network Connections.....	15
Obtaining Online Updates.....	16
Configuring Certificates of Authority.....	16
Setting User Authentication.....	16
Setting Local Accounts.....	17
Checking Release Notes.....	17
Configuring Hardware.....	17
Completing the Installation.....	17



---

# List of Figures

2-1 Itanium Edition Boot Menu.....	11
2-2 YaST Installation Type Menu.....	12
2-3 YaST Installation Options Menu.....	13
2-4 Choosing Software Installation.....	13
3-1 EFI Boot Manager Menu.....	15
3-2 Network Configuration Dialog.....	16



---

# About This Document

This document describes the procedures for installing SUSE LINUX Enterprise Server® 9 (SLES 9) for the Intel® Itanium 2® Processor Family from the Service Pack CDs.

## Intended Audience

This document is intended for Linux system administrators and assumes that the user has experience installing and managing Linux systems.

## Document Organization

This document is organized as follows:

- Chapter 1 Gives an overview of the installation process.
- Chapter 2 Describes the procedures for installing SUSE LINUX Enterprise Server.
- Chapter 3 Describes the procedures for completing the installation.

## Typographic Conventions

This document uses the following typographical conventions:

<code>%</code> , <code>\$</code> , or <code>#</code>	A percent sign represents the C shell system prompt. A dollar sign represents the system prompt for the Bourne, Korn, and POSIX shells. A number sign represents the superuser prompt.
<code>audit(5)</code>	A manpage. The manpage name is <i>audit</i> , and it is located in Section 5.
Command	A command name or qualified command phrase.
Computer output	Text displayed by the computer.
<b>User input</b>	Commands and other text that you type.
<b>NOTE</b>	A note contains additional information to emphasize or supplement important points of the main text.

## Related Information

### Updates

For the latest updates to the SUSE LINUX Enterprise Server 9 for the Itanium® Processor Family software, see one of the following Web site:

<http://www.hp.com/go/integritylinux>

### Documentation

Novell provides documentation for SLES 9 operating system installation with its installation media.

Documentation for the SUSE LINUX Enterprise Server 9 for the Intel® Itanium 2® Processor Family is available at <http://www.docs.hp.com/linux>.

## Publishing History

The document printing date and part number indicate the document's current edition. The printing date will change when a new edition is printed. Minor changes may be made at reprint without changing the printing date. The document part number will change when extensive changes are made. Document updates may be issued between editions to correct errors or document product changes. To ensure that you receive the updated or new editions, you should subscribe to the appropriate product support service. See your HP sales representative for details. You can find the latest version of this document on line at:

<http://www.docs.hp.com>.

Manufacturing Part Number	Supported Operating Systems	Supported Versions	Edition Number	Publication Date
5991-5302	SUSE LINUX Enterprise Server (SLES)	SLES 9	1	<i>April 2006</i>

## HP Encourages Your Comments

HP encourages your comments concerning this document. We are committed to providing documentation that meets your needs. Send any errors found, suggestions for improvement, or compliments to:

[feedback@fc.hp.com](mailto:feedback@fc.hp.com)

Include the document title, manufacturing part number, and any comment, error found, or suggestion for improvement you have concerning this document.

---

# 1 Introduction

Installing SUSE LINUX Enterprise Server 9 (SLES 9) on an HP Integrity server involves loading the operating system, and updating the system with the latest patches. If you order SLES 9 from HP, the normal procedure for installing the operating system is to use the HP Smart Setup EBSU application, provided on the HP Smart Setup CD that ship with your system hardware.

However, it is also possible to do a “cold install” of SLES 9 using the Service Pack media that is provided by HP. This manual describes these procedures.

## Installation Requirements

The following software media is required for performing the installation:

- The SLES 9 CDs
- The SLES 9 Service Packs CDs

For example, for SLES 9 Service Pack 3, the media includes six CDs for SLES 9 software and three Service Pack CDs that include patches and other updates.



## 2 Installing from Media

This chapter describes the procedures for beginning the installation process.



**NOTE:** This chapter presents a brief summary of a basic SLES 9 installation using the SLES 9 CDs. There are other installation methods available, such as a network installation, which are beyond the scope of this document. Detailed SLES installation information is available from Novell, from the following web site:

<http://www.novell.com/documentation/suse.html>

This document describes the installation process using the YaST graphical user interface using a VGA console. You can also install SLES using a serial console. The sequence of installation steps is the same regardless of the method used.

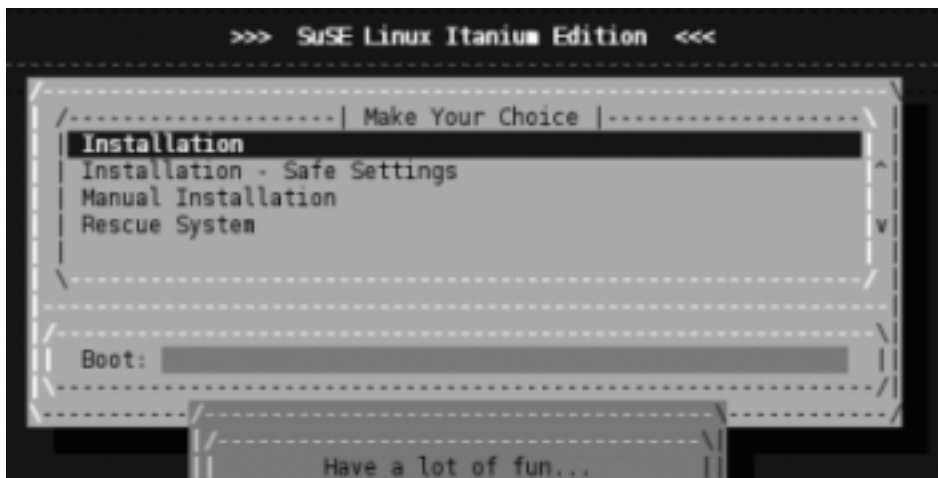
### Starting the Installation

You begin the SLES installation using the Service Pack CD1.

1. Insert the SLES 9 Service Pack CD1 in the CD drive of your system.
2. Power the system off and on to reboot the system.
3. Select the "Boot Option Maintenance" menu from the EFI Boot Manager, and select "Boot from File."
4. Find your CD or DVD device and select it.

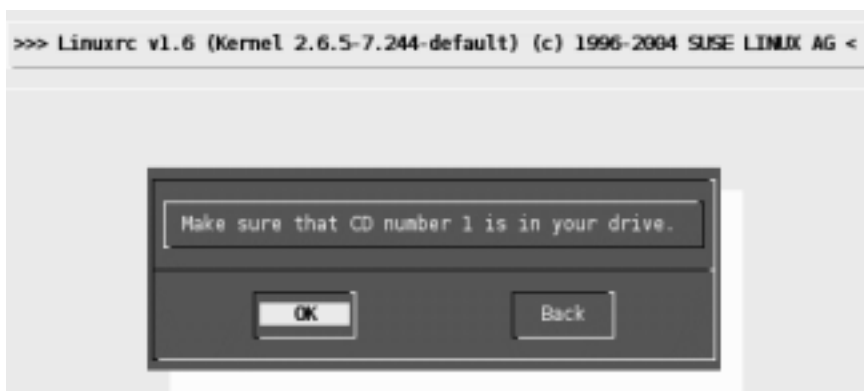
The Itanium Edition boot menu (Figure 2-1) is displayed.

**Figure 2-1 Itanium Edition Boot Menu**



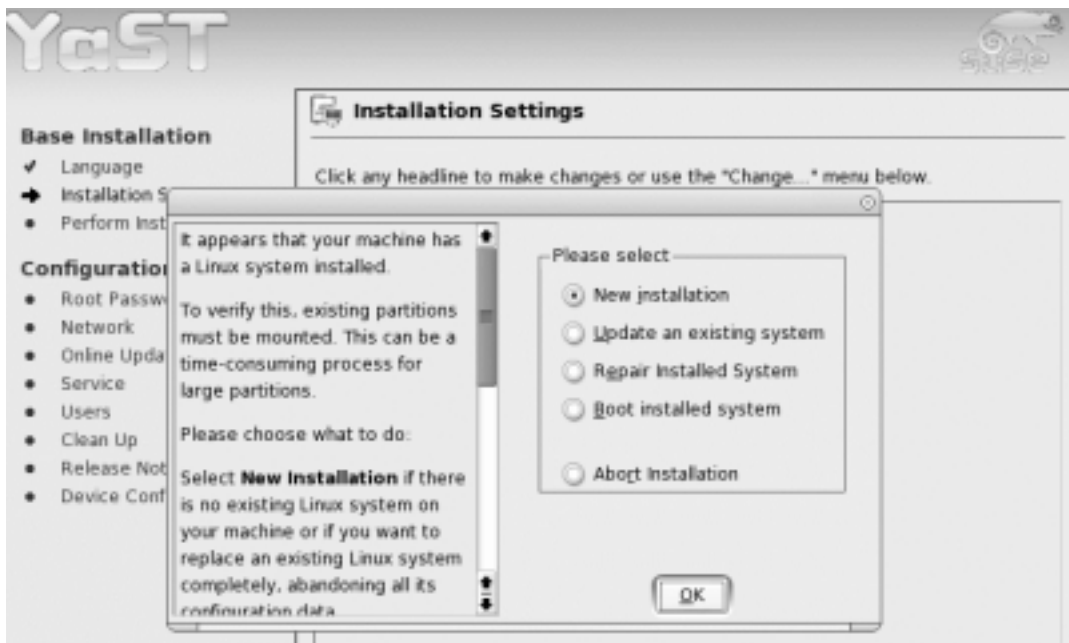
Choose the "Installation" option.

5. When prompted, insert the SLES 9 CD1.



6. YaST displays a software license agreement. Confirm your approval of the agreement.
7. After CD1 is loaded, the SLES 9 YaST Installation Type menu (Figure 2-2) is displayed.

**Figure 2-2 YaST Installation Type Menu**



8. Select the "New installation" option and click **OK**.

## Specifying Installation Options

Continue the installation by selecting and confirming partitioning, timezone, and other boot options.

1. The installation options menu (Figure 2-3) is displayed. It identifies system information, such as the type of processor and memory, keyboard and mouse settings, and default partitioning schemes.

**Figure 2-3 YaST Installation Options Menu**

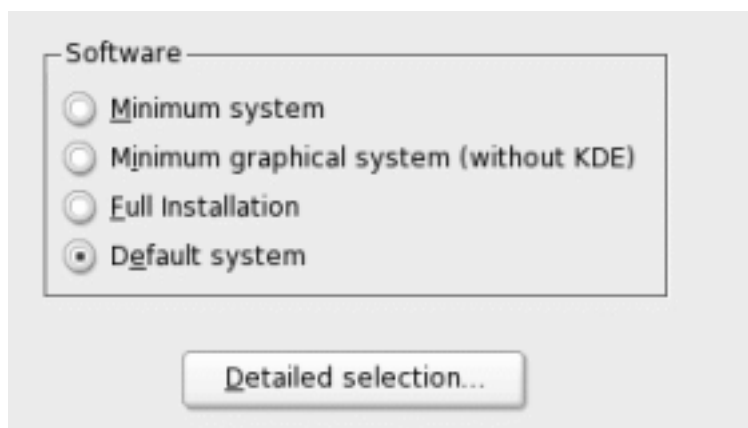


2. To change any of these installation settings, pick the category from the Change drop-down box, then modify the category as desired.  
HP recommends that you use the suggested partitioning schemes.

## Choosing Linux Software Packages

Next YaST asks you to choose the software installation method (Figure 2-4).

**Figure 2-4 Choosing Software Installation**



1. The choices include:
  - Minimum system — includes core operating system, with no graphical user interface
  - Minimum graphical system — includes the X Window System, but not the KDE desktop

- Full installation — installs all software packages, including developer packages
- Default system — installs KDE desktop and most of the KDE programs, but not developer packages

You can also select the Detailed selection for more information.

Click **Accept** to confirm your choice.

2. YaST then lists software packages that will be installed. Click in the checkboxes next to the software packages to select or deselect.

If there are any package dependencies or conflicts, they will be identified.

3. Click **Accept** to confirm your choice.

## Specifying Time Zone

YaST next displays a dialog requesting you to specify your timezone. Specify the time zone and local time, then click **Accept** to confirm your choice.

## Launching the Installation

After you specify the time zone, the main YaST installation menu displays.

If satisfied with the settings, click **Accept**

The installation process then starts during which the devices are set up, disks are partitioned, and software packages are installed. You will be asked to insert SLES CDs during this process so that various software can be installed.

At the conclusion of this process, a dialog indicates that the basic installation has finished and that the system needs to be rebooted. Confirm this by clicking **OK**.

The system then reboots.

---

## 3 Finalizing the Installation

You finalize the SLES installation by configuring networking, setting up root and other users, and setting up certificates, user authentication and hardware devices.

### Booting SLES 9

As the system boots, a number of informational messages are displayed. The EFI Boot Manager menu (Figure 3-1) is displayed.

**Figure 3-1 EFI Boot Manager Menu**

```
EFI Boot Manager ver 1.10 [14.61] Firmware ver 2.21 [4334]
Please select a boot option

SUSE SLES 9
EFI Shell [Built-in]
Autoinstall NIC
Boot Option Maintenance Menu
System Configuration Menu

Use ^ and v to change option(s). Use Enter to select an option
```

Select SUSE SLES 9.

### Setting the root Password

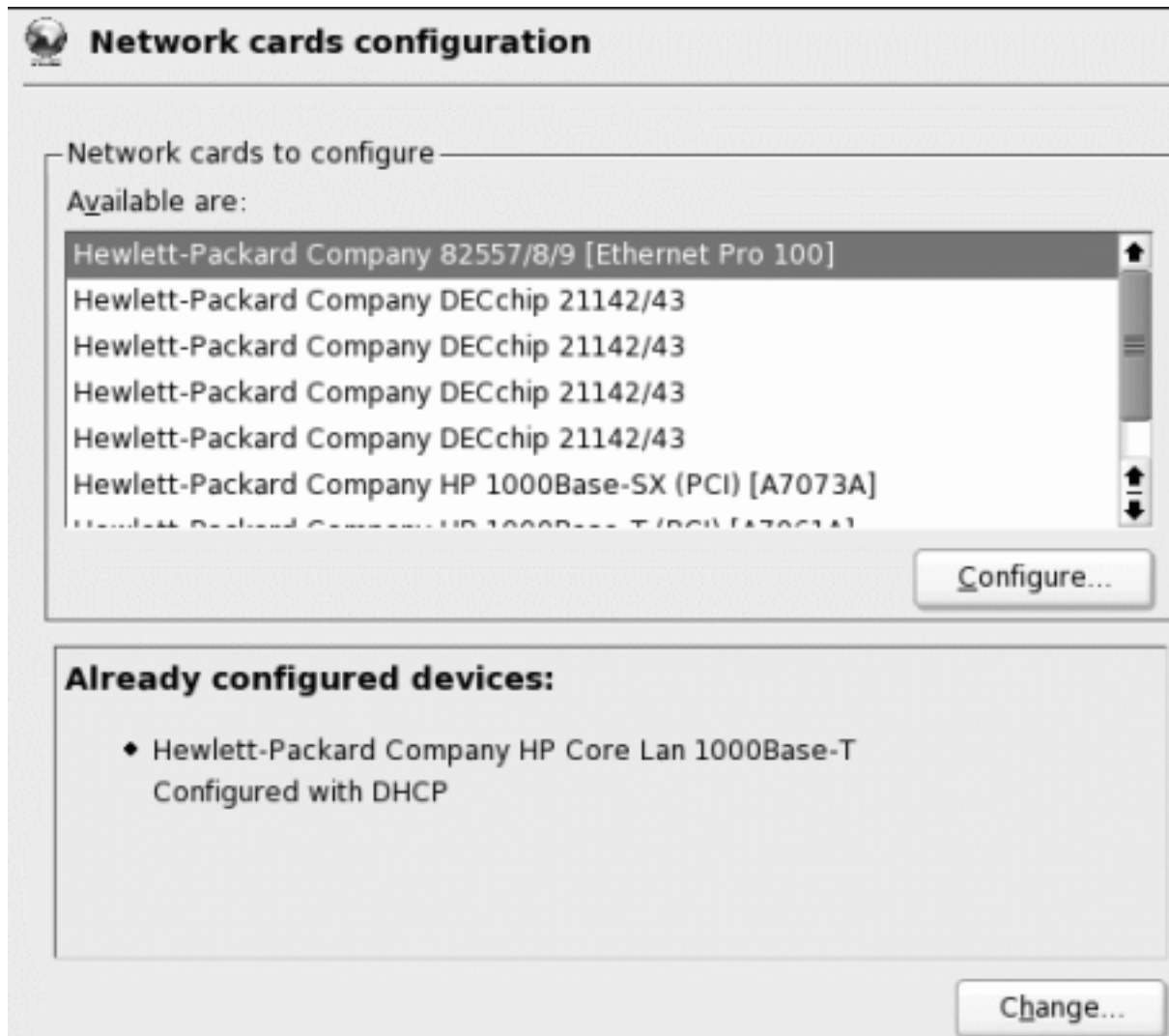
When the system is booted and the graphical user interface is displayed, YaST displays a dialog for you to specify a password for the root user.

Enter the root password. Click **Next**.

### Configuring Network Connections

You will now be asked to configure your network connections. YaST displays a network configuration dialog, identified the devices that have been discovered during the installation process. Modify these network devices as necessary. Figure 3-2 shows an example of network configuration, listing the HP devices currently available on the system.

Figure 3-2 Network Configuration Dialog



After you are satisfied with the network configuration, click on **Next**.

## Obtaining Online Updates

If you have configured an Internet connection, you can test it now. If YaST was able to connect to the SUSE servers at Novell, you will be prompted to perform an online update.

You can download any patched packages from Novell. You can also choose to perform an update after the installation is finalized.

Click **Next** to continue.

## Configuring Certificates of Authority

A Service Configuration dialog displays in which you can configure Certificate Authority (CA) and LDAP Server. For details about these services, see the SUSE LINUX documentation from Novell.

After completing the configuration on this dialog, click **Next**.

## Setting User Authentication

The User Authentication Method dialog is displayed. Choose the method you prefer to use for managing user accounts on your system:

- NIS — user accounts are managed centrally by a NIS server
- LDAP — user accounts are managed centrally by an LDAP server
- Locally (/etc/passwd) — for systems in which user accounts are managed using a local passwords file.

For details about these options, see the SUSE LINUX documentation from Novell

Click on **Next**.

## Setting Local Accounts

A dialog is displayed in which you can set up local user accounts. To create user accounts, fill in the fields for full user name, login name, and passwords. You can also choose two other options for individual users:

- Receive System Messages via E-Mail
- Automatic Login

When finished adding user accounts, click **Next**. The system confirms that it is writing the system configuration to disk.

## Checking Release Notes

YaST displays SUSE LINUX release notes. After reading the notes, click **Next**.

## Configuring Hardware

YaST opens a Hardware Configuration dialog, in which all devices it has found, such as graphics cards, printers, and sound cards, are identified.

If you want to change any of these device settings, click on the **Change** pulldown box and choose the device to be modified. You do not have to configure all devices at this time; they can be configured later. However, you should ensure that your graphics card is configured properly.

When satisfied with the hardware configuration, click on **Next**.

## Completing the Installation

After YaST writes the configuration data to disk, a dialog is displayed asking you to verify that you want to finish the installation. If so, click on **Finish**.

At this point, the SLES installation is complete. The graphical login screen will be displayed.